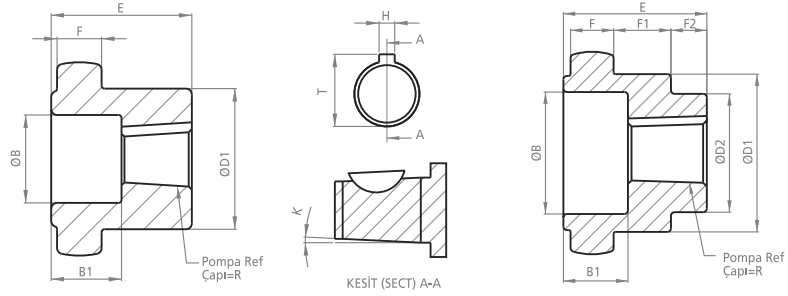


DK28-A

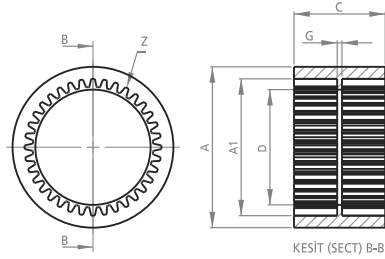
KAPLİN

COUPLING

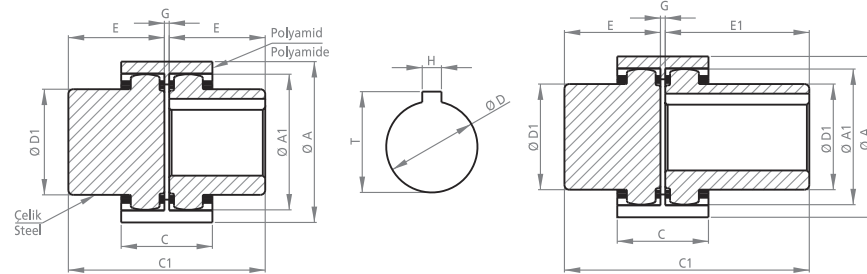


POMPA MİLİNE GÖRE İŞLENMİŞ KAPLİNLER PROCESSED COUPLINGS PUMP SHAFT

KOD CODE	B	B1	D1	D2	E	F	F1	F2	H	K	R	T	Z
DK280PD03A	-	-	43.70	-	40	12	-	-	4.00	-	13.45	15.45	34
DK28-G2B-03A	-	-	43.70	-	40	12	-	-	3.00	-	12.50	14.00	34
DK280PK03A	22	28	43.70	31	40	12	15	11	2.50	1/8	9.50	10.75	34
DK2811303A	34	18	43.70	29	40	12	16	10	3.20	1/5	17.00	18.60	34
DK2811703A	34	18	43.70	30	40	12	16	10	3.20	1/8	15.00	16.60	34
DK28-1P-03A	34	18	43.70	33	40	12	16	10	4.00	1/8	16.66	18.66	34
DK28-1P-03TA	34	18	43.70	33	40	12	16	10	3.20	1/8	16.66	18.26	34
DK282PK03A	34	13	43.70	-	40	12	-	-	4.00	1/8	21.59	23.60	34
DK282PD03A	-	-	43.70	-	40	12	-	-	6.35	-	22.15	25.35	34
DK28-SAE-A-03A	-	-	43.70	-	40	12	-	-	5.00	-	19.05	21.55	34



KOD CODE	A	A1	C	D	G	Z
DK2802A	67	57	38	47	5	34



MOTOR MİLİNE GÖRE İŞLENMİŞ KAPLİNLER PROCESSED COUPLINGS MOTOR SHAFT

KOD CODE	A	A1	C	C1	D	D1	E	E1	G	H	T	Z
DK2803A	67	56.5	40	82	-	43.7	40	-	2	-	-	34
DK281103A	67	56.5	40	82	11	43.7	40	-	2	4	13	34
DK281403A	67	56.5	40	82	14	43.7	40	-	2	5	16.5	34
DK281903A	67	56.5	40	82	19	43.7	40	-	2	6	22	34
DK282403A	67	56.5	40	82	24	43.7	40	-	2	8	28	34
DK282503A	67	56.5	40	82	25	43.7	40	-	2	8	29	34
DK282803A	67	56.5	40	82	28	43.7	40	-	2	8	32	34
UDK2803A	67	56.5	40	102	-	43.7	40	60	2	-	-	34
UDK281903A	67	56.5	40	102	19	43.7	40	60	2	6	22	34
UDK282403A	67	56.5	40	102	24	43.7	40	60	2	8	28	34
UDK282503A	67	56.5	40	102	25	43.7	40	60	2	8	29	34
UDK282803A	67	56.5	40	102	28	43.7	40	60	2	8	32	34

Motor Mil Çapları için
sayfa 26'ya bakınız.
Look at the paper 26 for
Motor Shaft Diameters.

TOLERANSLAR MİL ÖLÇÜLERİNDE: - 0 +0.05, DİĞER ÖLÇÜLERDE: ±0.15
TOLERANCES SHAFT DIMENSIONS: - 0 +0.05, OTHER DIMENSIONS: ±0.15

Tasarım Tescil No Design Registration Certificate Number: 2001 01950